

## RESEARCH COMMUNICATION

# DmGTSF1 is necessary for Piwi-piRISC-mediated transcriptional transposon silencing in the *Drosophila* ovary

Hitoshi Ohtani,<sup>1</sup> Yuka W. Iwasaki,<sup>1</sup> Aoi Shibuya,<sup>1</sup> Haruhiko Siomi,<sup>1</sup> Mikiko C. Siomi,<sup>2,3</sup> and Kuniaki Saito<sup>1,3</sup>

<sup>1</sup>Department of Molecular Biology, Keio University School of Medicine, Tokyo 160-8582, Japan, <sup>2</sup>Department of Biophysics and Biochemistry, Graduate School of Science, The University of Tokyo, Tokyo 113-0032, Japan

**The Piwi-piRNA (PIWI-interacting RNA) complex (Piwi-piRISC) in *Drosophila* ovarian somatic cells represses transposons transcriptionally to maintain genome integrity; however, the underlying mechanisms remain obscure. Here, we reveal that DmGTSF1, a *Drosophila* homolog of gametocyte-specific factor 1 (GTSF1) (which is required for transposon silencing in mouse testes), is necessary for Piwi-piRISC to repress target transposons and neighboring genes. DmGTSF1 depletion affected neither piRNA biogenesis nor nuclear import of Piwi-piRISC. *DmGTSF1* mutations caused derepression of transposons and loss of ovary follicle layers, resulting in female infertility. We suggest that DmGTSF1, a nuclear Piwi interactor, is an integral factor in Piwi-piRISC-mediated transcriptional silencing.**

Supplemental material is available for this article.

Received May 8, 2013; revised version accepted June 26, 2013.

Mobilization of transposable elements (TEs) can lead to natural insertion mutations that generally have negative effects on the host genome (Lynch 2007). Thus, host species have evolved control mechanisms that restrict TE activity. One such mechanism is RNAi/RNA silencing, in which small RNAs 20–30 nucleotides (nt) in length trigger multiple forms of sequence-specific gene silencing by guiding Argonaute complexes or RNA-induced silencing complexes (RISCs) to target RNAs by means of base-pairing (Ketjing et al. 1999; Tabara et al. 1999; Slotkin and Martienssen 2007; Siomi and Siomi 2009).

In the *Drosophila* germline, PIWI-interacting RNAs (piRNAs) are produced from single-stranded long non-coding RNAs that are transcribed from intergenic piRNA clusters on the genome. Mature piRNAs are loaded onto germline-specific Argonaute proteins or PIWI proteins to

yield piRISCs. piRNAs are amplified by the cytoplasmic “ping-pong” cycle, in which TE transcripts are consumed as both the source of piRNAs and the targets of PIWI cleavage, thereby repressing TEs in the cytoplasm (Karginov and Hannon 2010; Senti and Brennecke 2010; Siomi et al. 2011). It is becoming clear that piRISCs also mediate TE silencing in the nucleus but in a PIWI cleavage-independent manner (Saito et al. 2010; Klenov et al. 2011; Wang and Elgin 2011; Sienski et al. 2012; Darricarrère et al. 2013).

Although three PIWI proteins—AGO3, Aubergine (Aub), and Piwi—are expressed in the *Drosophila* ovary (Brennecke et al. 2007), only Piwi is expressed in ovarian somatic cells (OSCs), such as follicle cells, where piRNA intermediates are digested by a single-stranded nucleic acid-specific endonuclease, Zucchini (Ipsaro et al. 2012; Nishimasu et al. 2012). Zucchini products are further processed in the cytoplasmic Yb bodies into mature piRNAs (Olivieri et al. 2010; Saito et al. 2010). Piwi-piRISC formation also takes place at Yb bodies, where several piRNA biogenesis factors, including Armitage (Armi), accumulate (Olivieri et al. 2010; Saito et al. 2010). piRNAs in OSCs are not amplified because these cells lack the core factors (i.e., AGO3 and Aub). Piwi-piRISCs are imported into the nucleus, where they mediate TE repression. Nuclear silencing by Piwi-piRISCs does not require cleavage of TE transcripts but involves chromatin modification of TE loci on the genome (Saito et al. 2010; Wang and Elgin 2011; Sienski et al. 2012; Huang et al. 2013; Le Thomas et al. 2013; Rozhkov et al. 2013). However, the underlying mechanism remains completely unknown.

To identify genes required for the TE silencing mediated by Piwi-piRISCs, we used a candidate approach. An earlier study showed that mouse gametocyte-specific factor 1 (GTSF1) is required for TE silencing in the testis (Yoshimura et al. 2009). *GTSF1* knockout male mice show infertility owing to a lack of both DNA methylation and subsequent TE silencing during meiosis in spermatocytes, phenocopying mice lacking Mili or Miwi2 (Yoshimura et al. 2007, 2009; Aravin et al. 2008; Kuramochi-Miyagawa et al. 2008; Pillai and Chuma 2012), both of which encode mouse PIWI proteins. In the present study, we knocked down four homologs of GTSF1 in a cultured *Drosophila* OSC line (Saito et al. 2009) and found that depletion of one particular homolog, *CG3893*, results in derepression of TEs and neighboring genes, although the level and localization of Piwi-piRISCs were unchanged. We term *CG3893* as *DmGTSF1* hereafter. DmGTSF1 is a nuclear protein that interacts with Piwi, and a lack of DmGTSF1 results in strong enrichment of RNA polymerase II (Pol II) and less efficient enrichment of trimethylated histone H3 Lys 9 (H3K9me3) at TE loci on the genome, suggesting that DmGTSF1 is an integral factor in Piwi-piRISC-mediated transcriptional silencing.

## Results and Discussion

OSCs were transfected with individual siRNAs against *DmGTSF1* and its paralogs, *CG14036*, *CG32625*, and *CG34283* (Supplemental Fig. S1A), and Northern blotting and RT-qPCR were performed to examine the levels of piRNAs and *mdg1* transcripts, respectively, in the transfected cells. None of the siRNAs changed the expression

[**Keywords:** DmGTSF1; piRNA; Piwi; transposon; RNA silencing; *Drosophila*]  
<sup>3</sup>Corresponding authors  
 E-mail [saito@z6.keio.jp](mailto:saito@z6.keio.jp)  
 E-mail [siomim@biochem.s.u-tokyo.ac.jp](mailto:siomim@biochem.s.u-tokyo.ac.jp)  
 Article is online at <http://www.genesdev.org/cgi/doi/10.1101/gad.221515.113>.

levels of piRNAs, *Idefix*-piR-1, and/or *traffic jam*-piR-1 (Fig. 1A; Supplemental Fig. S1B). However, knockdown of DmGTSF1, but not of its paralogs, increased the level of *mdg1* (Fig. 1B; Supplemental Fig. S1C), a long terminal repeat element, suggesting that only DmGTSF1 is required for TE silencing. Depletion of Maelstrom (Mael), a known piRNA factor (Lim and Kai 2007), led to almost identical phenotypes (Fig. 1A,B). A recent study showed that Mael is required for transcriptional TE silencing mediated by Piwi-piRISC but not for piRNA biogenesis (Sienski et al. 2012), suggesting the existence of functional parallels between Mael and DmGTSF1. Immunofluorescence staining for Myc-DmGTSF1 in OSCs revealed that DmGTSF1 shows a nuclear localization, as does Piwi (Fig. 1C). This further supports the idea that DmGTSF1 functions in nuclear TE silencing. Depletion of HP1a derepressed *mdg1* (Fig. 1B), consistent with the earlier observation that HP1a functions in TE silencing in the ovaries (Wang and Elgin 2011). The expression levels of piRNAs were unaffected by a lack of HP1a (Fig. 1A; Saito et al. 2010). Thus, piRNA biogenesis does not require HP1a. Loss of *Armi*, a piRNA biogenesis factor (Olivieri et al. 2010; Saito et al. 2010), resulted in down-regulation of piRNAs, verifying our results.

To investigate the roles of *DmGTSF1* in fertility, females of the P-element insertion line *P{w[+mC]=GSV6}/GS12962* (Supplemental Fig. S2A), in which *DmGTSF1* mRNA and its protein product are expressed below detection levels (Fig. 2A; Supplemental Fig. S2B), were crossed with *Oregon R* male flies. *DmGTSF1*<sup>-/-</sup> females laid no eggs (data not shown). In contrast, females in the reciprocal cross laid eggs (data not shown). The *DmGTSF1* transcript was barely detected in testes (Graveley et al. 2011), and

*DmGTSF1*<sup>-/-</sup> testes appeared normal (data not shown). Thus, DmGTSF1 is specifically required for female fertility.

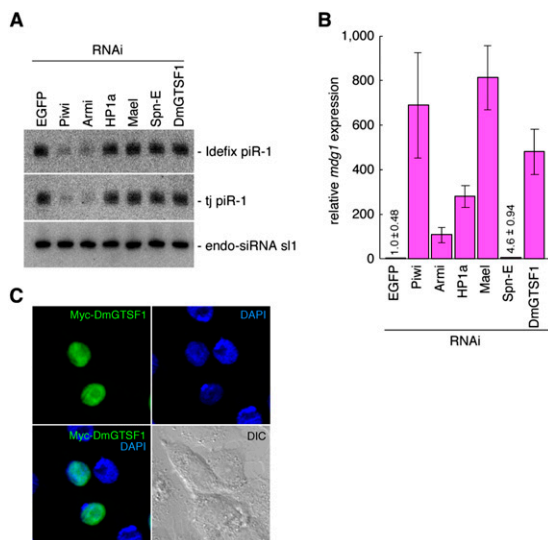
*DmGTSF1*<sup>-/-</sup> ovaries appeared rather small and severely deformed, similar to those observed in Piwi mutants (Lin and Spradling 1997). A comparison of Aub immunostaining images with images showing DAPI-stained nuclei revealed that *DmGTSF1*<sup>-/-</sup> ovaries lack a follicle cell layer, which encapsulates each egg chamber in *DmGTSF1*<sup>+/-</sup> ovaries (Fig. 2B).

Immunostaining was also performed using antibodies against the polar follicle cell marker FasIII (Ruohola et al. 1991) and the oocyte marker protein Orb (Christerson and McKearin 1994). In *DmGTSF1*<sup>+/-</sup> ovaries, FasIII is detected in monolayered follicle cells in both the germarium and early stage egg chambers, but later, its expression becomes restricted to two polar follicle cells in individual egg chambers, as has been observed in wild-type ovaries (Fig. 2C; Ruohola et al. 1991). However, in *DmGTSF1*<sup>-/-</sup> ovaries, monolayered FasIII-positive cells were lost at early stages; rather, FasIII-positive cells were dispersed within the germarium-like structures. Mutant egg chambers at later stages contained multiple FasIII-positive cells (Fig. 2C). Polar cell specification is likely disrupted owing to the loss of DmGTSF1.

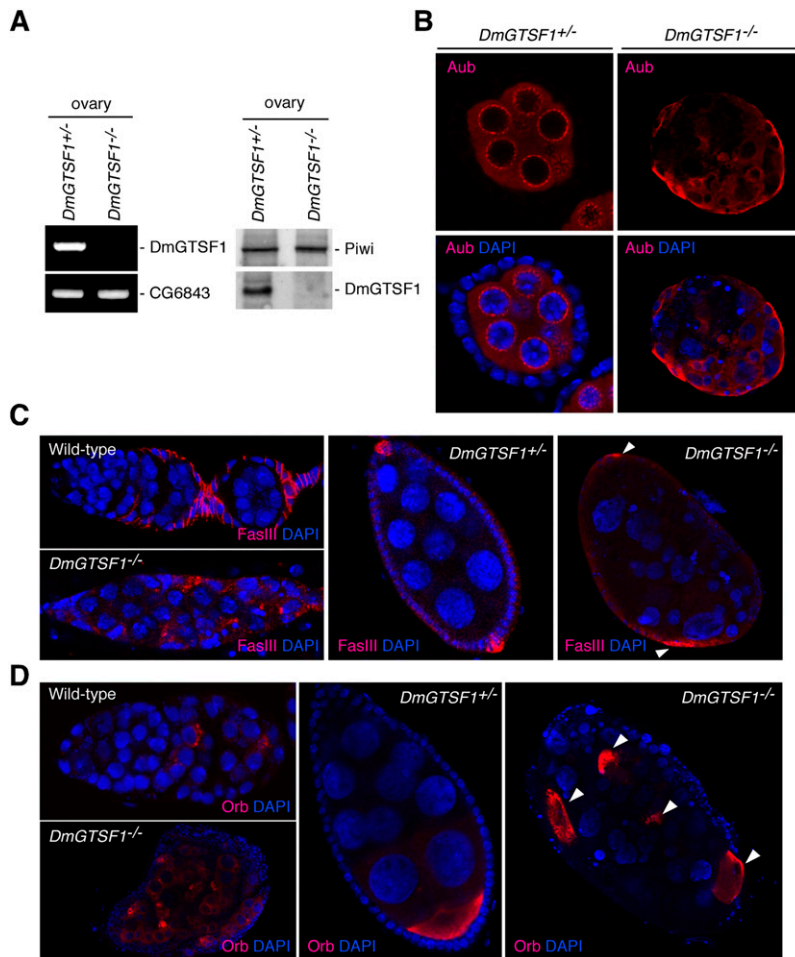
Orb expression is normally activated during mitotic division. Then, Orb gradually accumulates in oocytes during development (Christerson and McKearin 1994). This spatiotemporal expression pattern of Orb was observed in *DmGTSF1*<sup>+/-</sup> ovaries (Fig. 2D). However, in *DmGTSF1*<sup>-/-</sup> ovaries, Orb appeared in all cells within the early cysts, and its expression was seen in multiple cells in late egg chambers (Fig. 2D). These *DmGTSF1* mutant phenotypes are very similar, if not identical, to those of piRNA pathway mutants: The number of follicle cells was also reduced in the ovaries of mutant *fs(1)Yb*, a piRNA biogenesis factor and a key component of Yb bodies (Szakmary et al. 2009; Olivieri et al. 2010; Saito et al. 2010). Fusion of egg chambers caused by loss of Mael and *fs(1)Yb* also resulted in aberrant multiplicity of Orb-positive cells in late egg chambers (Johnson et al. 1995; Sato et al. 2011). These overlapping phenotypes further suggest functional parallels between Mael and DmGTSF1.

*DmGTSF1* mutant flies appear otherwise normal. This correlates well with the observation that a subset of TEs was derepressed in *DmGTSF1*<sup>-/-</sup> ovaries but not in the carcasses of *DmGTSF1*<sup>-/-</sup> flies (Supplemental Fig. S2C). The RT-qPCR results confirm the requirement of DmGTSF1 for TE silencing not only in OSCs, but also in the ovaries.

To compare the levels of transcripts globally, we performed mRNA sequence (mRNA-seq) analysis of OSCs transfected with siRNAs against the known piRNA pathway genes *Piwi*, *Mael*, and *Armi* along with *DmGTSF1* and normalized the expression levels to those in OSCs transfected with control siRNAs against *EGFP*. mRNA-seq samples were prepared at 48 h post-transfection, yielding 168,369,636 genome-mapped reads in total (Supplemental Table S1). Reads per kilobase per million mapped reads (RPKM) values for annotated genes were highly correlated between *Piwi* knockdown and control knockdown cells ( $R^2 = 0.99$ ). In contrast, several of the 125 annotated *Drosophila melanogaster* TE families showed strong increases in RNA levels (Fig. 3A,B). For example, the transcript levels for the long terminal repeat elements *mdg1*, *gypsy*, and 297 were increased by >156-fold, >32-fold, and >17-fold, respectively, upon *Piwi* knockdown,



**Figure 1.** DmGTSF1, a nuclear factor, is necessary for TE silencing but not piRNA biogenesis in OSCs. (A) DmGTSF1 and with the known piRNA factors *Piwi*, *Armi*, *HP1a*, *Mael*, and *Spn-E* were depleted in OSCs by RNAi and Northern blotting performed on total RNAs isolated from the cells 48 h post-transfection. The levels of *Idefix*-piRNA and *tj*-piRNA were unchanged by DmGTSF1 depletion, suggesting the dispensability of DmGTSF1 in piRNA biogenesis in OSCs. (B) RT-qPCR showed that *mdg1* is derepressed by DmGTSF1 depletion, as it is by *Piwi* depletion. (C) Immunofluorescence for Myc-DmGTSF1 (green) in OSCs. DAPI staining (blue) shows the locations of the nuclei.



**Figure 2.** *DmGTSF1* is essential for development of the ovaries. (A, left) RT-PCR results showing that the homozygous  $P[w/+mC]=GSV6/GS12962$  mutant does not express *DmGTSF1* mRNAs but does express *CG6843*, a neighboring gene. A schematic drawing of *DmGTSF1* (green) and *CG6843* (magenta) genes on the *Drosophila* genome is shown in Supplemental Figure S2A. (+/-)  $P[w/+mC]=GSV6/GS12962/TM3$ ; (-/-)  $P[w/+mC]=GSV6/GS12962/P[w/+mC]=GSV6/GS12962$ . (Right) Western blot showing that *DmGTSF1*<sup>-/-</sup> flies do not express *DmGTSF1* protein but do express Piwi. A monoclonal antibody against *DmGTSF1* was generated, and the specificity is shown in Supplemental Figure S2B. (B, left) Immunostaining images showing that Aub (red) is expressed only in germline cells that are encapsulated by somatic follicle cells, which are positive by DAPI-staining in *DmGTSF1*<sup>+/-</sup> flies. (Right) In contrast, the *DmGTSF1*<sup>-/-</sup> egg chamber lacks follicular epithelium morphogenesis. (C) Polar cell specification is defective in *DmGTSF1*<sup>-/-</sup> ovaries. (Left) Ovaries were immunostained with antibodies against a polar follicle cell marker, FasIII (red). Enlarged images of the *DmGTSF1*<sup>+/-</sup> egg chamber (middle) and the *DmGTSF1*<sup>-/-</sup> egg chamber (right) are shown. FasIII-positive cells in the mutant are indicated by white arrowheads. (D) Oocyte polarity and specification are defective in *DmGTSF1*<sup>-/-</sup> ovaries. (Left) Ovaries were immunostained with antibodies against an oocyte marker protein, Orb (red). Enlarged images of the *DmGTSF1*<sup>+/-</sup> egg chamber (middle) and the *DmGTSF1*<sup>-/-</sup> egg chamber (right) are shown. Several Orb-positive cells are detected in the *DmGTSF1*<sup>-/-</sup> ovary (arrowheads).

supporting the recent results of Sienski et al. (2012). Almost identical results were obtained upon knockdown of *Armi*, *Mael*, and *DmGTSF1* (Fig. 3B; Supplemental Fig. S3B). This suggests that not only *Armi* (Haase et al. 2010; Olivieri et al. 2010; Saito et al. 2010) and *Mael* (Sienski et al. 2012) but also *DmGTSF1* function in the Piwi-piRISC pathway in OSCs. RT-qPCR confirmed that *mdg1*, but not other TEs such as *I-element* and *Het-A*, was markedly derepressed in Piwi- and *DmGTSF1*-depleted cells (Supplemental Fig. S3A). Although HP1a is required for silenc-

ing of various TEs in OSCs (Fig. 3B), the TE derepression pattern was rather different in HP1a-depleted cells ( $R^2 = 0.49$ ) (Supplemental Fig. S3B). Depletion of *DmGTSF1* does not affect the levels or cellular localization of Piwi and *Mael* in OSCs (Supplemental Fig. S3C,D; data not shown), confirming that the observed defective phenotypes were not due to a secondary effect of *DmGTSF1* depletion. Likewise, loss of *Mael* and HP1a did not change the cellular localization of *DmGTSF1* (Supplemental Fig. S3E).

Piwi-piRISCs influence the expression of protein-coding genes near TE insertions (Sienski et al. 2012). To assess the role of *DmGTSF1* in this effect, we analyzed our mRNA-seq data for 28 genes shown in the previous study (Fig. 3C,D; Sienski et al. 2012). As expected, the expression levels of these neighboring genes were comparable between *DmGTSF1* and *Piwi* knockdown cells. The results for some genes (for example, *bab1* and *CG12477*) did not coincide with those of the previous study (Sienski et al. 2012), although transposon insertions near the genes were confirmed by PCR (Supplemental Fig. S4). This variegation may be due to subtle unexpected differences in knock-down and/or cell manipulation conditions. Collectively, all of these bioinformatic data strongly support the notion that *DmGTSF1* is an integral factor in the Piwi-piRNA pathway.

Both Piwi and *DmGTSF1* are localized to the nucleus (Fig. 1C; Supplemental Fig. S3D). We then asked whether *DmGTSF1* forms a complex with Piwi in vivo. Myc-*DmGTSF1* fused C-terminally with EGFP (Myc-*DmGTSF1*-EGFP) was expressed in OSCs, and the complex immunoprecipitated with an anti-Myc antibody was probed with an anti-Piwi antibody. Myc-*DmGTSF1*-EGFP and endogenous Piwi coprecipitated (Fig. 4A) even in the presence of RNase A (Supplemental Fig. S5A).

An in vitro pull-down assay using recombinant *DmGTSF1* fused to glutathione S-transferase (GST-*DmGTSF1*) and crude OSC lysates confirmed their association (Fig. 4B; Supplemental Fig. S5B): Piwi was detected with GST-*DmGTSF1* to an extent similar to that with GST-Pimet/*DmHen1*, which interacts with Piwi and 2'-O-methylates piRNAs upon Piwi loading (Horwich et al. 2007; Saito et al. 2007). Under the conditions we used, *Mael* was not detected in the *DmGTSF1* complex (Supplemental Fig. S5C), although endogenous *Mael* was partially localized to the nucleus (Supplemental Fig. S5D). Moreover, neither *Armi* nor AGO1, another Argonaute protein and a component of the microRNA pathway in *Drosophila* (Okamura et al. 2004), was detected with GST-*DmGTSF1* (Fig. 4B). *Armi* is cytoplasmic and interacts with Piwi (Olivieri et al. 2010; Saito et al. 2010), suggesting that Piwi changes protein interactors upon nuclear import.

*DmGTSF1* consists of 167 amino acid residues and contains two U11-48K-like CHHC-type Zn finger motifs



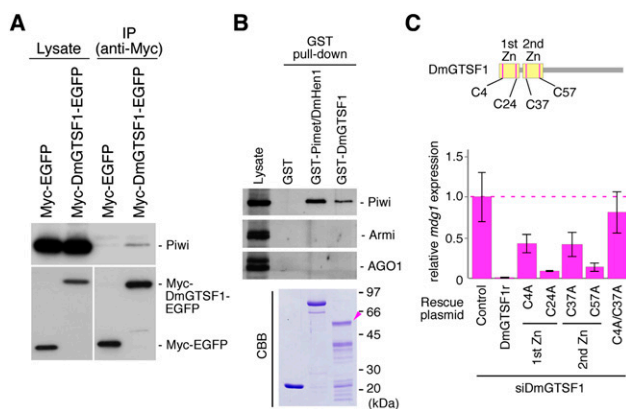
GST pull-down assay, and RT-qPCR analysis were performed as previously described (Supplemental Material; Saito et al. 2007, 2010). DNA oligonucleotides used in RT-qPCR are summarized in Supplemental Table S2. RNA-seq analysis, plasmid construction, and rescue assay are shown in the Supplemental Material.

### *Drosophila strains and brooding analysis*

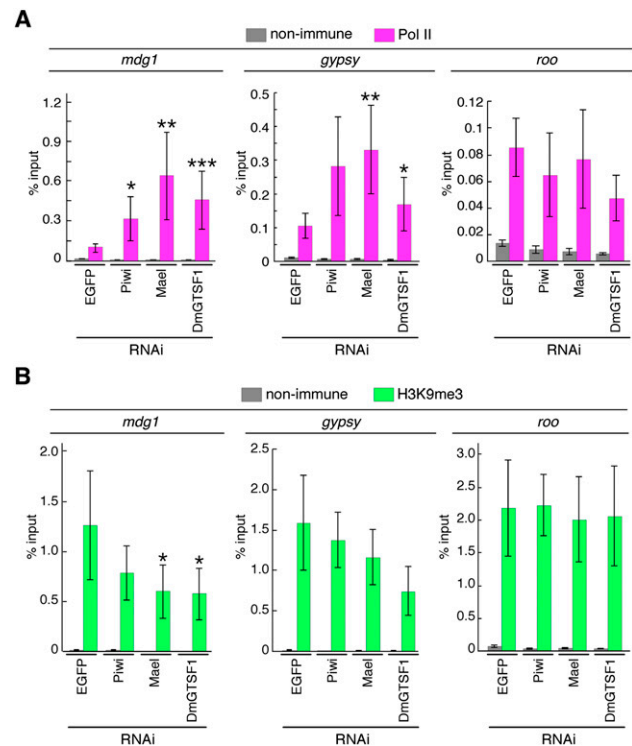
*Yellow white* (*y w*) and Oregon R were employed as wild-type strains. The *DmGTSF1* allele used was *P[w/+mC]=GSV6/GS12962/TM3* (*Drosophila* Genomics Resource Center stock no. 204406). All stocks were maintained at 25°C. Mating tests were done in batches of test males and at least 10 virgin females per vial. The presence or absence of progeny was scored after at least 7 d. For brooding tests, virgin *DmGTSF1*<sup>+/-</sup> and *DmGTSF1*<sup>-/-</sup> females were mated to Oregon R males in yeast apple agar plates. The females were left in the plate to continue to lay eggs until the 10th day after mating. Laid eggs on the plate were counted on the fourth, seventh, and 10th days under a microscope.

### *ChIP assay*

Cells ( $2 \times 10^8$ ) were cross-linked with 1% formaldehyde for 10 min at room temperature, and cross-linking was then stopped with 125 mM glycine for 5 min at room temperature. The DNA-protein complexes were lysed with 1% lysis buffer (50 mM HEPES-KOH at pH 7.4, 150 mM sodium chloride, 1 mM EDTA, 1% Triton X-100, 0.1% sodium deoxycholate, protease inhibitors). The cross-linked chromatin was sheared into ~200 base pairs using Covaris S2 ultrasonicators. The DNA-protein complexes were incubated with nonimmune IgG antibody, anti-Pol II antibody 8WG16 (Santa Cruz Biotechnology), or anti-H3K9me3 antibody (Abcam, 8898) immobilized on Dynabeads-Protein G for 2 h at 4°C. The beads were washed with high-salt lysis buffer (50 mM HEPES-KOH at pH 7.4, 450 mM sodium chloride, 1 mM EDTA, 1% Triton X-100, 0.1% sodium deoxycholate, protease inhibitors) and wash buffer (50 mM Tris-HCl at pH 8.0, 1 mM EDTA, 250 mM lithium chloride, 0.5% NP-40, 0.5% sodium deoxycholate) followed by TE (10 mM Tris-HCl at pH 8.0, 1 mM EDTA). After reversing the cross-linking for 12–16 h at 65°C, samples were treated with RNase A for 30 min at 37°C, and then DNA was recovered. Short DNA fragments corresponding to retrotransposons were amplified using



**Figure 4.** DmGTSF1 associates with Piwi in vivo and in vitro. (A) Immunoprecipitation and Western blotting show that endogenous Piwi immunoprecipitated with Myc-DmGTSF1-EGFP but not with Myc-EGFP. (B) DmGTSF1 associates with PIWI but not with Armi or AGO1. Bound fractions from GST-Pimet/DmHen1 and GST-DmGTSF1 were probed with antibodies against Piwi, Armi, and AGO1. (Bottom panel) An arrowhead shows where full-length GST-DmGTSF1 migrates on the Coomassie Brilliant Blue-stained gel. (C, top) A schematic drawing of DmGTSF1. (Bottom) RNAi-resistant Myc-tagged full-length DmGTSF1r fused with EGFP (Myc-DmGTSF1r-EGFP) and Zn finger mutants were expressed in DmGTSF1-depleted OSCs. The expression levels of *mdg1* were monitored by RT-qPCR. DmGTSF1 Zn finger mutants failed to rescue *mdg1* silencing lost following depletion of DmGTSF1 in OSCs.



**Figure 5.** Depletion of DmGTSF1 increases the association of Pol II with retrotransposons and decreases the levels of H3K9me3 on retrotransposons targeted by Piwi-piRISC. The associations of Pol II (A) and H3K9me3 (B) with *mdg1*, *gypsy*, and *roo* were assayed by ChIP and qPCR. The results represent the percentage input values of three independent samples. Each experiment was repeated at least three times. Error bars indicate SEM values. *P*-values were calculated using the two-tailed Student's *t*-test for comparisons with control siRNA-transfected groups (EGFP). (\*) *P* < 0.05; (\*\*) *P* < 0.01; (\*\*\*) *P* < 0.001.

a LightCycler 480 Real-Time PCR Instrument II with SYBR Premix Ex Taq (Takara). The primers used are listed in Supplemental Table S2. Pol II ChIP sequencing (ChIP-seq) libraries for EGFP, Piwi, Mael, and DmGTSF1 knockdown OSCs were analyzed using a single lane of Illumina MiSeq. This yielded ~2.6 million to 3.4 million genome-mapped reads in each transfected sample. For computational analyses, we trimmed for adaptor sequences, mapped the reads to *Drosophila* genome release dm3, and calculated reads per million genome mappers (RPM) values as described within the RNA-seq computational analysis section. Sequencing data are available through Gene Expression Omnibus (accession no. GSE47006).

### Acknowledgments

We thank H. Ishizu, K. Sato, S. Yamanaka, and M. Kamatani for technical assistance, and other members of the Siomi laboratory for discussions and comments on the manuscript. We thank S. Inagaki for technical suggestions and comments regarding the immunofluorescence analyses. This work was supported by the Funding Program for Next-Generation World-Leading Researchers (LS109) to K.S.; Core Research for Evolutional Science and Technology (CREST) from the Japan Society for the Promotion of Science and Technology (JSPS) to M.C.S.; a Grant-in-Aid for Scientific Research from the Ministry of Education, Culture, Sports, Science, and Technology (MEXT) of Japan to H.S. and M.C.S.; and a Grant-in-Aid for the Global COE program from MEXT to Keio University to H.S.

### Note added in proof

While this manuscript was under revision, Muerdter et al. (2013) reported that *DmGTSF1/CG3893* is required for TE silencing. The investigators termed *DmGTSF1/CG3893* as *Asterix* (Muerdter et al. 2013).

## References

- Andreeva A, Tidow H. 2008. A novel CHHC Zn-finger domain found in spliceosomal proteins and tRNA modifying enzymes. *Bioinformatics* **24**: 2277–2280.
- Aravin AA, Sachidanandam R, Bourc'his D, Schaefer C, Pezic D, Toth KF, Bestor T, Hannon GJ. 2008. A piRNA pathway primed by individual transposons is linked to de novo DNA methylation in mice. *Mol Cell* **31**: 785–799.
- Brennecke J, Aravin AA, Stark A, Dus M, Kellis M, Sachidanandam R, Hannon GJ. 2007. Discrete small RNA-generating loci as master regulators of transposon activity in *Drosophila*. *Cell* **128**: 1089–1103.
- Christerson LB, McKearin DM. 1994. orb is required for anteroposterior and dorsoventral patterning during *Drosophila* oogenesis. *Genes Dev* **8**: 614–628.
- Darricarrère N, Liu N, Watanabe T, Lin H. 2013. Function of Piwi, a nuclear Piwi/Argonaute protein, is independent of its slicer activity. *Proc Natl Acad Sci* **110**: 1297–1302.
- Graveley BR, Brooks AN, Carlson JW, Duff MO, Landolin JM, Yang L, Artieri CG, van Baren MJ, Boley N, Booth BW, et al. 2011. The developmental transcriptome of *Drosophila melanogaster*. *Nature* **471**: 473–479.
- Haase AD, Fenoglio S, Muerdter F, Guzzardo PM, Czech B, Pappin DJ, Chen C, Gordon A, Hannon GJ. 2010. Probing the initiation and effector phases of the somatic piRNA pathway in *Drosophila*. *Genes Dev* **24**: 2499–2504.
- Horwich MD, Li C, Matranga C, Vagin V, Farley G, Wang P, Zamore PD. 2007. The *Drosophila* RNA methyltransferase, DmHen1, modifies germline piRNAs and single-stranded siRNAs in RISC. *Curr Biol* **17**: 1265–1272.
- Huang XA, Yin H, Sweeney S, Raha D, Snyder M, Lin H. 2013. A major epigenetic programming mechanism guided by piRNAs. *Dev Cell* **24**: 502–516.
- Ipsaro JJ, Haase AD, Knott SR, Joshua-Tor L, Hannon GJ. 2012. The structural biochemistry of Zucchini implicates it as a nuclease in piRNA biogenesis. *Nature* **491**: 279–283.
- Johnson E, Wayne S, Nagoshi R. 1995. *fs (1) Yb* is required for ovary follicle cell differentiation in *Drosophila melanogaster* and has genetic interactions with the Notch group of neurogenic genes. *Genetics* **140**: 207–217.
- Karginov FV, Hannon GJ. 2010. The CRISPR system: Small RNA-guided defense in bacteria and archaea. *Mol Cell* **37**: 7–19.
- Ketting RF, Haverkamp TH, van Luenen HG, Plasterk RH. 1999. Mut-7 of *C. elegans*, required for transposon silencing and RNA interference, is a homolog of Werner syndrome helicase and RNaseD. *Cell* **99**: 133–141.
- Klenov MS, Sokolova OA, Yakushev EY, Stolyarenko AD, Mikhaleva EA, Lavrov SA, Gvozdev VA. 2011. Separation of stem cell maintenance and transposon silencing functions of Piwi protein. *Proc Natl Acad Sci* **108**: 18760–18765.
- Kuramochi-Miyagawa S, Watanabe T, Gotoh K, Totoki Y, Toyoda A, Ikawa M, Asada N, Kojima K, Yamaguchi Y, Ijiri TW, et al. 2008. DNA methylation of retrotransposon genes is regulated by Piwi family members MILI and MIWI2 in murine fetal testes. *Genes Dev* **22**: 908–917.
- Le Thomas A, Rogers AK, Webster A, Marinov GK, Liao SE, Perkins EM, Hur JK, Aravin AA, Toth KF. 2013. Piwi induces piRNA-guided transcriptional silencing and establishment of a repressive chromatin state. *Genes Dev* **27**: 390–399.
- Lim AK, Kai T. 2007. Unique germ-line organelle, nuage, functions to repress selfish genetic elements in *Drosophila melanogaster*. *Proc Natl Acad Sci* **104**: 6714–6719.
- Lin H, Spradling AC. 1997. A novel group of pumilio mutations affects the asymmetric division of germline stem cells in the *Drosophila* ovary. *Development* **124**: 2463–2476.
- Lynch M. 2007. *The origins of genome architecture*. Sinauer Associates, Sunderland, MA.
- Muerdter F, Guzzardo PM, Gillis J, Luo Y, Yu Y, Chen C, Fekete R, Hannon GJ. 2013. A genome-wide RNAi screen draws a genetic framework for transposon control and primary piRNA biogenesis in *Drosophila*. *Mol Cell* **50**: 736–748.
- Nishimasu H, Ishizu H, Saito K, Fukuhara S, Kamatani MK, Bonnefond L, Matsumoto N, Nishizawa T, Nakanaga K, Aoki J, et al. 2012. Structure and function of Zucchini endoribonuclease in piRNA biogenesis. *Nature* **491**: 284–287.
- Okamura K, Ishizuka A, Siomi H, Siomi MC. 2004. Distinct roles for Argonaute proteins in small RNA-directed RNA cleavage pathways. *Genes Dev* **18**: 1655–1666.
- Olivieri D, Sykora MM, Sachidanandam R, Mechtler K, Brennecke J. 2010. An in vivo RNAi assay identifies major genetic and cellular requirements for primary piRNA biogenesis in *Drosophila*. *EMBO J* **29**: 3301–3317.
- Pillai RS, Chuma S. 2012. piRNAs and their involvement in male germline development in mice. *Dev Growth Differ* **54**: 78–92.
- Rozhkov NV, Hammell M, Hannon GJ. 2013. Multiple roles for Piwi in silencing *Drosophila* transposons. *Genes Dev* **27**: 400–412.
- Ruohola H, Bremer KA, Baker D, Swedlow JR, Jan LY, Jan YN. 1991. Role of neurogenic genes in establishment of follicle cell fate and oocyte polarity during oogenesis in *Drosophila*. *Cell* **66**: 433–449.
- Saito K, Sakaguchi Y, Suzuki T, Siomi H, Siomi MC. 2007. Pimet, the *Drosophila* homolog of HEN1, mediates 2'-O-methylation of Piwi-interacting RNAs at their 3' ends. *Genes Dev* **21**: 1603–1608.
- Saito K, Inagaki S, Mituyama T, Kawamura Y, Ono Y, Sakota E, Kotani H, Asai K, Siomi H, Siomi MC. 2009. A regulatory circuit for piwi by the large Maf gene traffic jam in *Drosophila*. *Nature* **461**: 1296–1299.
- Saito K, Ishizu H, Komai M, Kotani H, Kawamura Y, Nishida KM, Siomi H, Siomi MC. 2010. Roles for the Yb body components Armitage and Yb in primary piRNA biogenesis in *Drosophila*. *Genes Dev* **24**: 2493–2498.
- Sato K, Nishida KM, Shibuya A, Siomi MC, Siomi H. 2011. Maelstrom coordinates microtubule organization during *Drosophila* oogenesis through interaction with components of the MTOC. *Genes Dev* **25**: 2361–2373.
- Senti KA, Brennecke J. 2010. The piRNA pathway: A fly's perspective on the guardian of the genome. *Trends Genet* **26**: 499–509.
- Sienski G, Donertas D, Brennecke J. 2012. Transcriptional silencing of transposons by Piwi and maelstrom and its impact on chromatin state and gene expression. *Cell* **151**: 964–980.
- Siomi H, Siomi MC. 2009. On the road to reading the RNA-interference code. *Nature* **457**: 396–404.
- Siomi MC, Sato K, Pezic D, Aravin AA. 2011. PIWI-interacting small RNAs: The vanguard of genome defence. *Nat Rev Mol Cell Biol* **12**: 246–258.
- Slotkin RK, Martienssen R. 2007. Transposable elements and the epigenetic regulation of the genome. *Nat Rev Genet* **8**: 272–285.
- Szakmary A, Reedy M, Qi H, Lin H. 2009. The Yb protein defines a novel organelle and regulates male germline stem cell self-renewal in *Drosophila melanogaster*. *J Cell Biol* **185**: 613–627.
- Tabara H, Sarkissian M, Kelly WC, Fleenor J, Grishok A, Timmons L, Fire A, Mello CC. 1999. The rde-1 gene, RNA interference, and transposon silencing in *C. elegans*. *Cell* **99**: 123–132.
- Wang SH, Elgin SC. 2011. *Drosophila* Piwi functions downstream of piRNA production mediating a chromatin-based transposon silencing mechanism in female germ line. *Proc Natl Acad Sci* **108**: 21164–21169.
- Yoshimura T, Miyazaki T, Toyoda S, Miyazaki S, Tashiro F, Yamato E, Miyazaki J. 2007. Gene expression pattern of Cue110: A member of the uncharacterized UPF0224 gene family preferentially expressed in germ cells. *Gene Expr Patterns* **8**: 27–35.
- Yoshimura T, Toyoda S, Kuramochi-Miyagawa S, Miyazaki T, Miyazaki S, Tashiro F, Yamato E, Nakano T, Miyazaki J. 2009. Gtsf1/Cue110, a gene encoding a protein with two copies of a CHHC Zn-finger motif, is involved in spermatogenesis and retrotransposon suppression in murine testes. *Dev Biol* **335**: 216–227.



## **DmGTSF1 is necessary for Piwi–piRISC-mediated transcriptional transposon silencing in the *Drosophila* ovary**

Hitoshi Ohtani, Yuka W. Iwasaki, Aoi Shibuya, et al.

*Genes Dev.* 2013 27: 1656-1661

Access the most recent version at doi:[10.1101/gad.221515.113](https://doi.org/10.1101/gad.221515.113)

---

**Supplemental Material**

<http://genesdev.cshlp.org/content/suppl/2013/08/02/27.15.1656.DC1.html>

**References**

This article cites 39 articles, 17 of which can be accessed free at:  
<http://genesdev.cshlp.org/content/27/15/1656.full.html#ref-list-1>

**Email Alerting Service**

Receive free email alerts when new articles cite this article - sign up in the box at the top right corner of the article or [click here](#).

---

---

To subscribe to *Genes & Development* go to:  
<http://genesdev.cshlp.org/subscriptions>

---